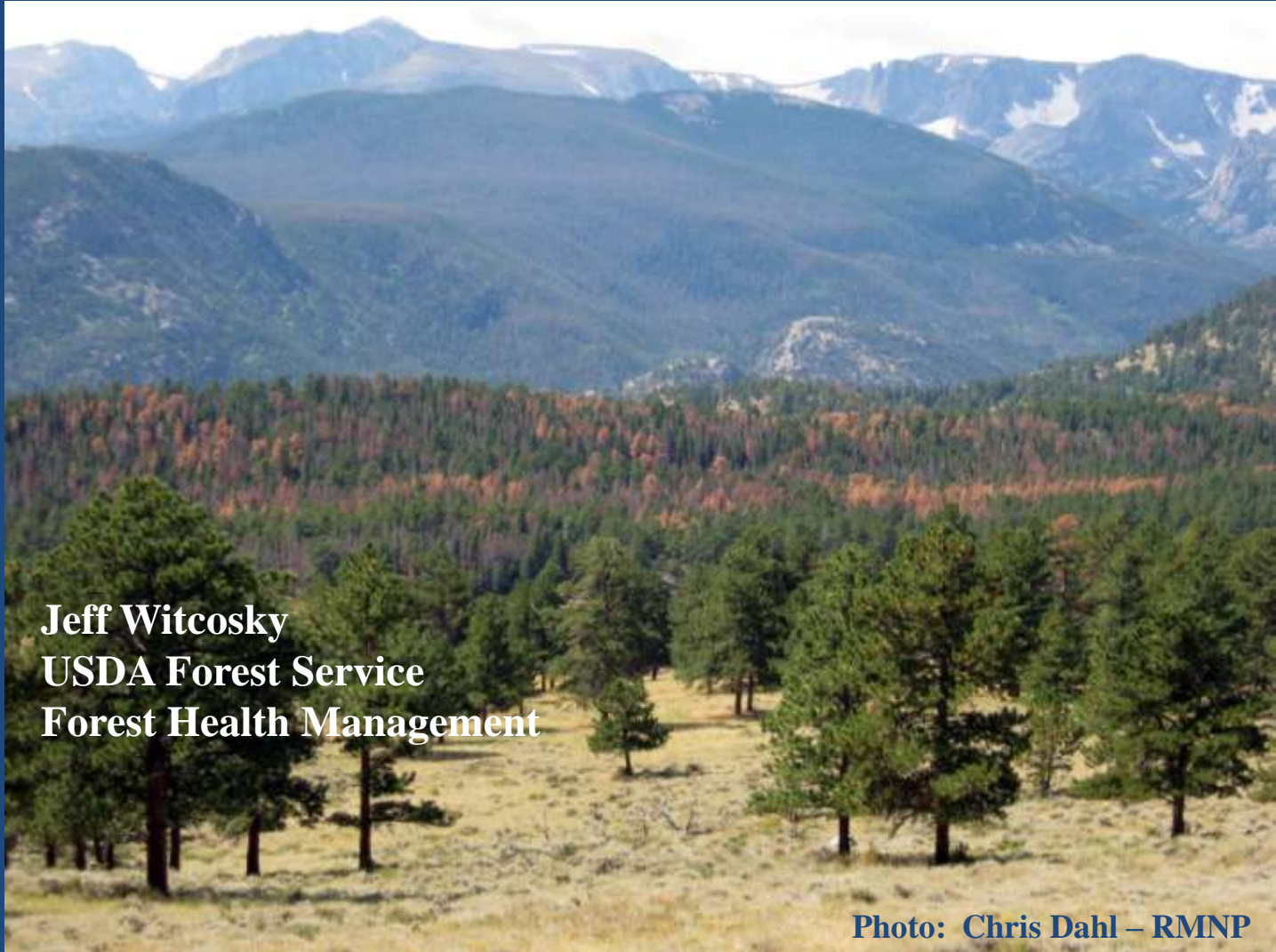


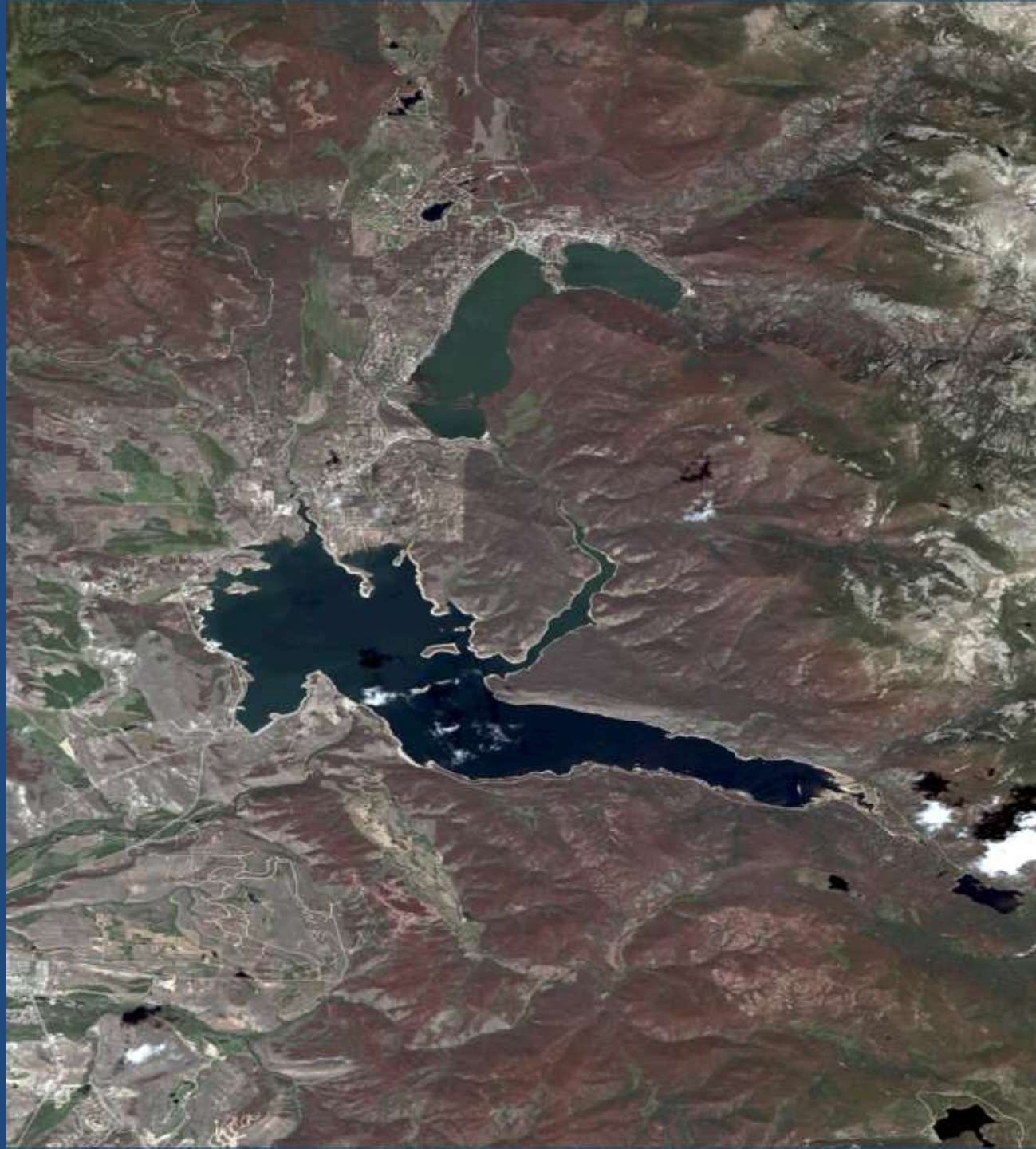
Mountain Pine Beetle Epidemic Spreads into Ponderosa Pine on the Northern Front Range



Jeff Witcosky
USDA Forest Service
Forest Health Management

Photo: Chris Dahl – RMNP

Mountain
Pine Beetle
Impact
across
Grand
County –
2005



Boulder and Gilpin Counties, Tennessee Mountain – 2005




Photo: William Ciesla — FHM Intl.

Northern Front Range Mountain Pine Beetle Website

Northern Front Range Mountain Pine Beetle Working Group

Home | Partners | News | Contact Us

Mountain Pine Beetle Information



The Northern Front Range Mountain Pine Beetle Working Group consists of local government agencies coordinating efforts in the midst of the mountain pine beetle (MPB) epidemic moving to Colorado's Front Range. The organization is working closely with the Front Range Fuels Treatment Partnership Roundtable to utilize the most current information available. One of the primary purposes of the working group is to provide a centralized source for mountain pine beetle-related information to the public.

Frequently Asked Questions

This section provides basic answers to some of the most often asked questions, as well as links to websites where more information is available.


- Biomass
- Fire Behavior & Mitigation
- General Forest Health / About the Beetle
- Government Actions & Mitigation Efforts
- Landowner Concerns / Personal Property Owner Issues
- Recreation
- Treatment

Partners

- Arapaho and Roosevelt National Forests and Pawnee National Grassland
- Colorado State Forest Service
- Colorado State University Extension
- Region 2 Bark Beetle Incident Management Team
- Roddy Mountain National Park
- Boulder County
- Clear Creek County
- Ogilvie County
- Jefferson County
- Larimer County

Announcements

- 2009 Report on the Health of Colorado's Forests (pdf 6 MB)
- 2009 Forest Health Aerial Survey Results
- Landowner Guide to Living with Bark Beetles (pdf 2.7 MB)
- Colorado State Forest Service ARRA Grants Information
- Potential Impacts of MPB on Northern Front Range Ponderosa Pine Forests
- Will MPB Epidemic Spread from Lodgepole to Ponderosa Pine along Front Range? [Read the report...](#)
- 1996-2008 Colorado Mountain Pine Beetle Epidemic Map



Home | Partners | News | Contact Us

www.frftp.org/nfrpinebeetle.htm



Photo: Canadian Forest Service

Acres Affected by Mountain Pine Beetle

County	2009 Acres	2010 Acres	2011 Trend
Boulder	50,000	68,000	+/-
Clear Creek	46,000	33,000	-
Gilpin	33,000	35,000	-
Jefferson	1,900	2,900	+/-
Larimer	412,000	510,000	+

Acres Affected by Mountain Pine Beetle

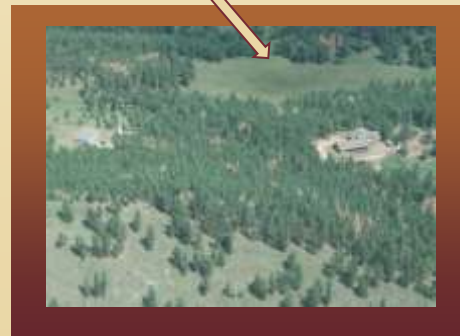
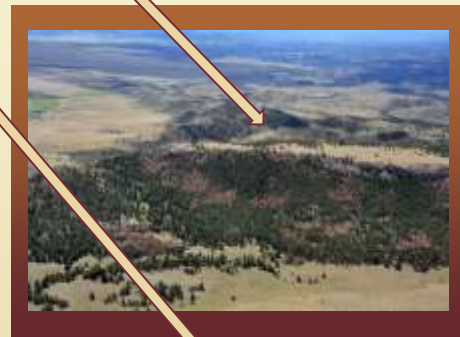
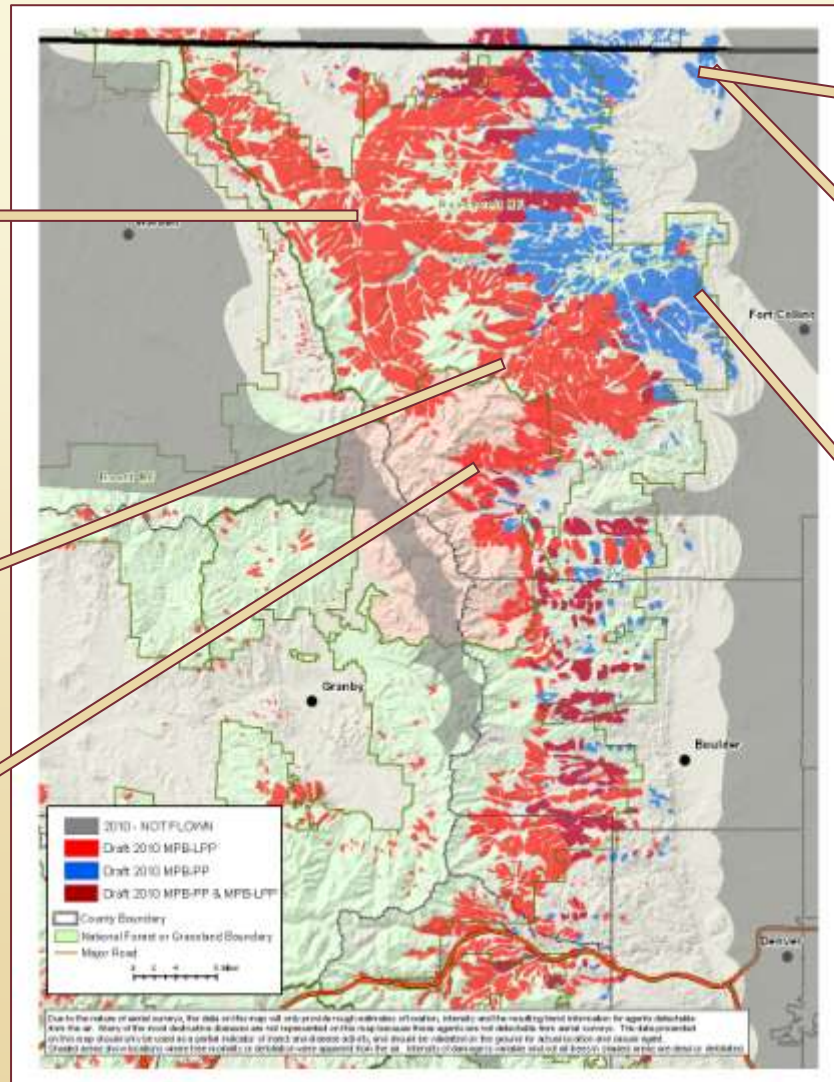
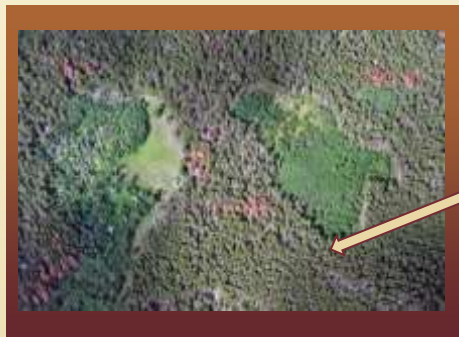
County	2009 Acres	2010 Acres	2011 Trend
Douglas	5	200	-
El Paso	510	20	-
Park	27,000	22,000	-
Teller	100	6	-



Mountain Pine Beetle in Northern Colorado

Lodgepole Pine and Ponderosa Pine

2010 Aerial Survey Draft Data and Select Photos



Falling Tree Hazards

- Lodgepole pines begin to fall within 3 years of death. In one study, 50% of trees fell within 9 years, 90% of trees fell within 14 years. Trees fall over as the roots decay and break.
- Ponderosa pines start to fall within three years. On the Front Range, trees fell at the rate of 3-5% per year for 3-4 years after death. After that, the rate of tree fall increased substantially; most trees fell within 7-10 years of death. Trees broke off at ground level or within 2 feet of the ground.

Questions?

