

# PLATTE BASIN FISHERIES MANAGEMENT FROM 30,000 FT

**KEN KEHMEIER**  
**SENIOR AQUATIC BIOLOGIST**  
**COLORADO DIVISION OF**  
**WILDLIFE**

Image USDA Farm Service Agency  
© 2010 Google  
© USFWS

© 2010 Google

61 mi

Imagery Date: Jun 17, 2005

13 T 619281.45 m E 4448448.00 m N elev 4420 ft

Eye alt 208.40 mi

# Overview

- Colorado Division of Wildlife - Strategic Plan
- Long Range Plan
- Fishing Recreation Program - Statewide Fisheries Management Long-Range Plan
- Colorado Wildlife Commission Policies
  - D1 - Management of Aquatic Wildlife
  - D9 - Whirling Disease Policy
- Administrative Directive W-6 (2007)
  - Fish Management and Stocking

# Water Classification

- Native Fish Species Conservation Management
- Wild Trout Management in Recreational Waters
- Sportfish Management - Stocked Waters
  - Optimum Management
  - Intensive Management
- Non-Managed Waters

# Native Species Conservation Management

- The primary purpose of these waters is management for the recovery, conservation, protection, or enhancement of native fish species. Such waters may have secondary recreational attributes for sport species.



# Native Species Conservation Management

- Category 100 - Native non-salmonid recovery/conservation streams
- Category 101 - Native non-salmonid recovery/conservation lakes
  
- Category 201 - Native cutthroat recovery or conservation lakes
- Category 202 - Native cutthroat recovery or conservation streams

# Wild Trout Management in Recreational Waters

- Wild trout waters are those where the management intent is to maintain wild trout populations. Natural productivity in these waters is used to sustain fish populations and associated recreational angling. Both native and non-native salmonids can be managed as wild trout. Special angling restrictions may or may not apply.



# Wild Trout Management in Recreational Waters

- Category 301- Wild salmonid recreation lakes
- Category 302- Wild salmonid recreation streams
- Category 303- Wild salmonid special regulation streams

# Sportfish Management

## Optimum Management

- Put-and-Grow waters
- Waters in this category lack biological and/or physical attributes to support adequate self-sustaining populations, but have sufficient productivity to allow the development of desirable fisheries. Both harvest pressure and lack of spawning habitat prevent these locations from being managed for wild fish.



# Sportfish Management Optimum Management

## Coldwater

- Category 401- Coldwater recreation high lakes
- Category 402- Coldwater recreation drive-to lakes <100 acres
- Category 403- Coldwater recreation drive-to lakes 100-500 acres
- Category 404- Coldwater drive-to lakes >500 acres
- Category 405- Coldwater stocked streams
- Category 406- Coldwater Special regulation stocked streams

# Sportfish Management Optimum Management

## Warmwater

- Category 407- Warmwater lakes <100 acres
- Category 408- Warmwater lakes 100-500 acres
- Category 409- Warmwater lakes > 500 acres
- Category 410- Warmwater Special Use Lakes

# Sportfish Management

## Intensive Management

- Put and Take waters
- Intensive management waters require stocking of catchable-sized and/or subcatchable fish to provide angling recreation in waters that lack productivity yet have the suitable water quality to support fish populations.



# Sportfish Management Intensive Management

- Category 501- Coldwater catchable only lakes < 30 acres
- Category 502 - Coldwater catchable only lakes > 30 acres
- Category 503 - Coldwater combined subcatchable and catchable lakes < 100 acres
- Category 504 - Coldwater combined subcatchable and catchable lakes 100-500 acres
- Category 505 - Coldwater combined subcatchable and catchable lakes > 500 acres
- Category 506 - Coldwater combined subcatchable and catchable big fish lakes
- Category 507 - Coldwater combined sub-catchable and catchable streams

# Sportfish Management Intensive Management

## Warmwater

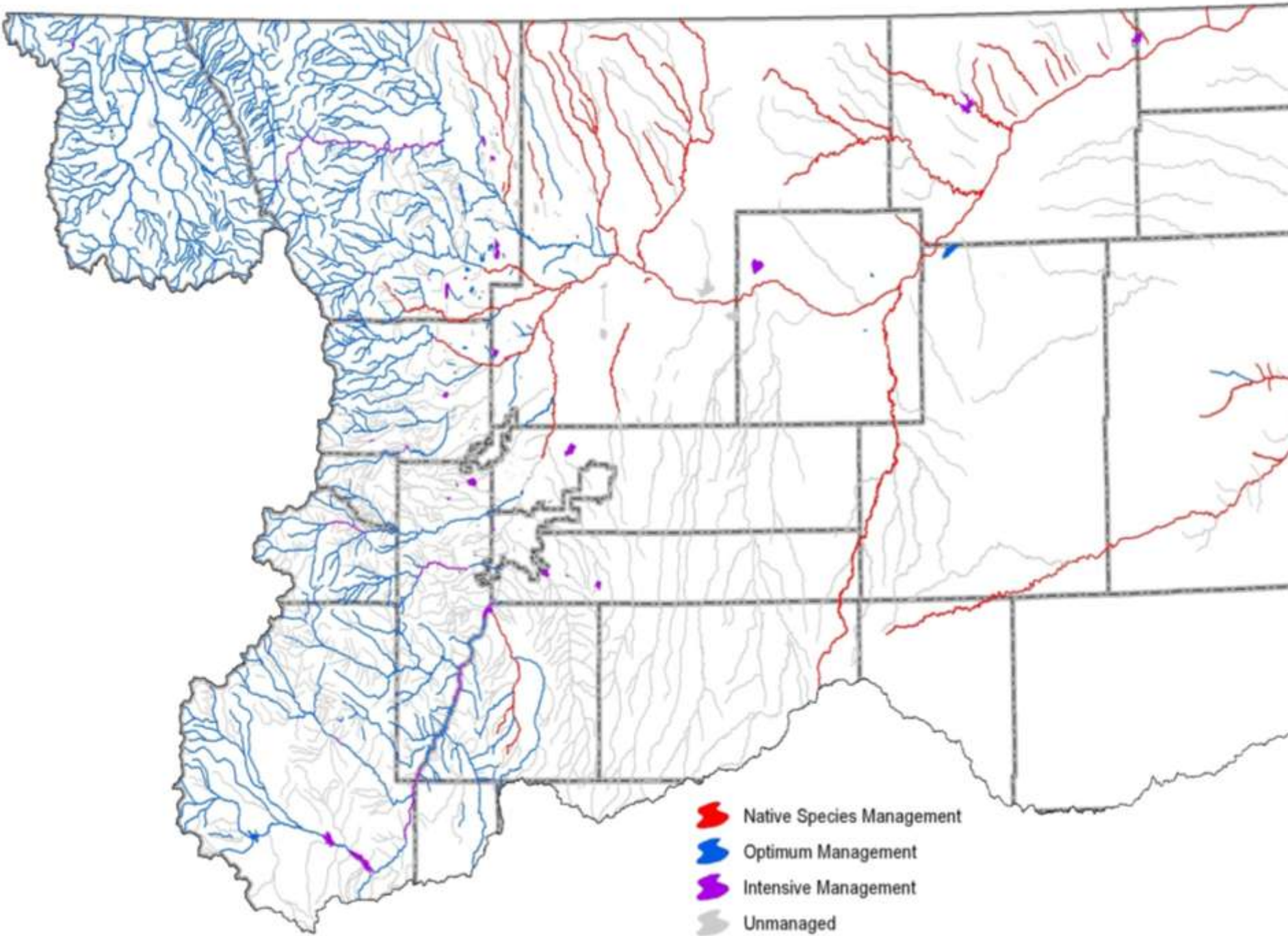
- Category 508 - Warmwater mixed lakes < 100 acres
- Category 509 - Warmwater mixed lakes 100-500 acres
- Category 510 - Warmwater mixed lakes > 500 acres

# Non-Managed Waters

- Waters in this classification do not require active fishery management for a variety of reasons. These waters may be privately owned, have intermittent flows, or possibly not capable of supporting fish. If these waters do not support fish, they generally provide habitat for amphibians or necessary water for other wildlife.

# Non-Managed Waters

- Category 600 - Non-managed Streams
- Category 700 - Non-managed Lakes



# South Platte Basin Aquatic Habitat

<b>Lakes and Reservoirs</b>	<b>71,819 Acres</b>
<b>Stream Miles</b>	<b>8919 Miles</b>

<b>Man-made Reservoirs</b>	<b>96% of acres</b>
<b>Natural Lakes- sportfish</b>	<b>4% of acres</b>

<b>Natural Stream - sportfish</b>	<b>31% of miles</b>
<b>- native species</b>	<b>69% of miles</b>

# Recreation Day Estimates

- Angler Survey
  - Conducted about every 4 years
- Categorization and Creel Survey
  - Utilizes historic Creel Survey data
    - 1988-2010 – changes as new creel come available
  - Recreation standards
    - Catch per day goal -- 2.5 fish/day
    - Angler day length –
      - 4 hours/ day on lakes
      - 2.5 hours/ day on streams
    - Return to creel of >50% for catchables 15% for subcatchable

# Platte Basin Recreation Day Estimates

- Native Fish Species Conservation Management
  - Recreation days per year= 40,603
- Wild Trout Management in Recreational Waters
  - Recreation days per year = 114,660
- Sportfish Management - Stocked Waters
  - Optimum Management Recreation days/year= 722,158
  - Intensive Management Recreation days/year= 1,552,370

Platte Basin Fishing Recreation Days 2,389,290

# Economic Impacts of Fishing in the Platte Basin of Colorado

Activity	Res.	Non-Res	Direct expenditures by Residents
Big Game	106	216	
Small Game	94	87	
<b>Fishing</b>	<b>67</b>	<b>118</b>	

- Measured in 2007 dollars.
- BBC Research & Consulting, based on 2006 USFWS national survey.

# Economic Impacts of Fishing in the Platte Basin of Colorado

\$160,082,430

Direct expenditures by anglers to  
Colorado's economy per year in the  
Platte Basin